



# SERVICE PARTS LIST

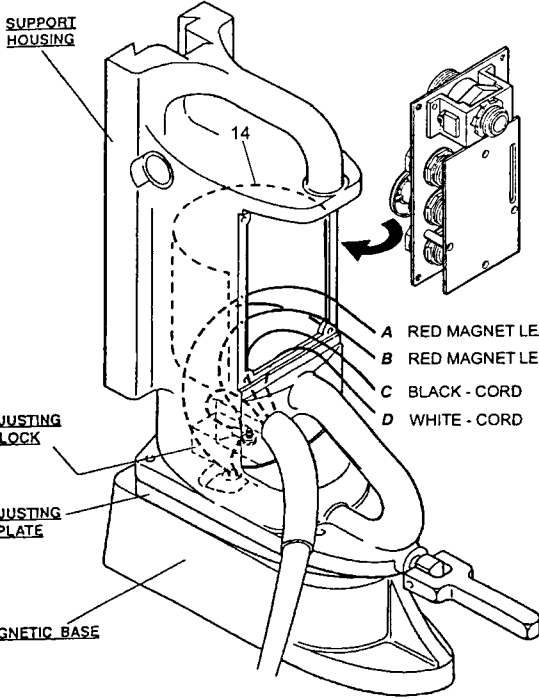
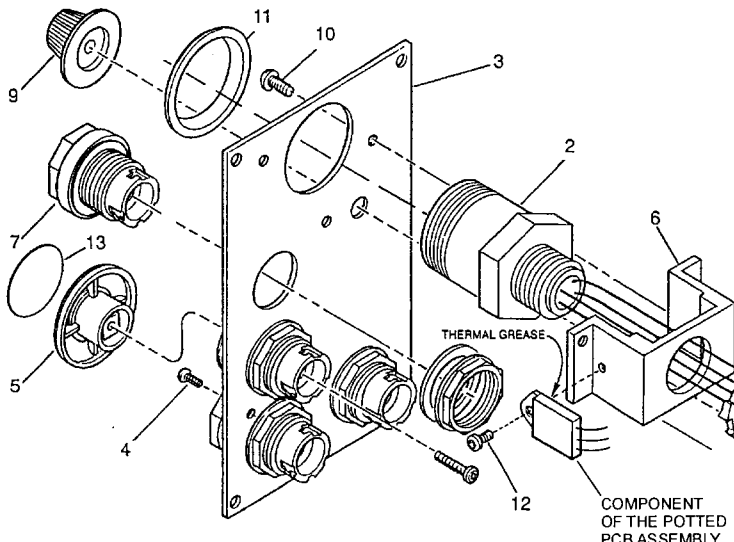
**BULLETIN NO.**  
**54-30-0152**

SPECIFY CATALOG NO. AND SERIAL NO. WHEN ORDERING PARTS		REVISED BULLETIN	DATE
<b>MAG STAND CONTROL PANEL</b>		54-30-0151	Mar. '99
CATALOG NO. <b>23-35-0312</b>	SERIAL NUMBER	WIRING INSTRUCTION <b>SEE BELOW</b>	

**EXAMPLE:**  
Component Parts (Small #) Are Included  
When Ordering The Assembly (Large #).

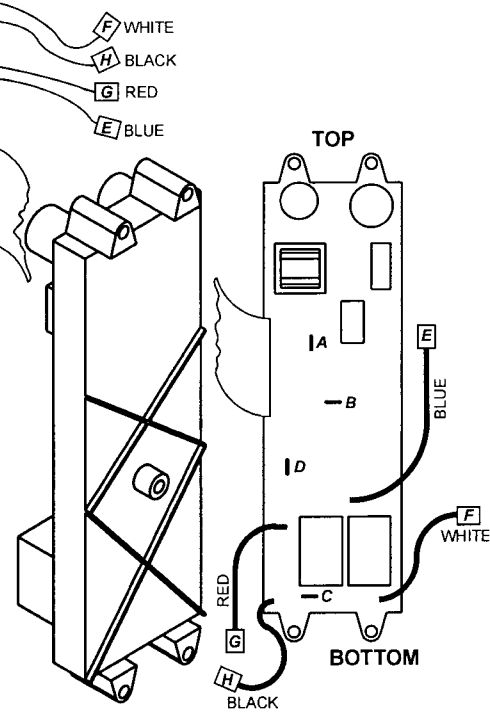
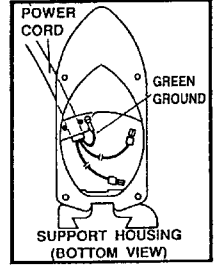
00/0

FIG.	PART NO.	DESCRIPTION OF PART	NO. REQ.
★ 1	-----	Circuit Board Assembly	(1)
★ 2	23-33-0495	Receptacle Assembly	(1)
★ 3	44-66-0810	Panel Plate Assembly	(1)
★ 4	06-82-5268	4-40 x 3/8" Pan Hd. Taptite T-9	(4)
5	42-42-0385	Drill "OFF" Button	(1)
6	42-36-1770	Receptacle Bracket	(1)
★ 7	-----	Switch Button	(1)
	42-42-0405	Push Button - Green (Solid)	(1)
	42-42-0400	Push Button - Yellow (Solid)	(1)
	42-42-0440	Push Button - White (Clear)	(1)
	42-42-0450	Push Button - Push Button Blank	(1)
9	23-18-0080	Speed Dial	(1)
10	06-82-7252	8-32 x 3/8" Pan Hd. Sit. Tapt. T-20	(2)
11	45-06-0650	Receptacle Seal	(1)
12	06-81-8650	6-32 x 1/4" Rd. Hd. Sems	(1)
★ 13	10-98-0225	"Drill-OFF" Label	(1)
★ 14	23-16-1580	Panel Insulator	(1)



A RED MAGNET LEAD } INTERCHANGEABLE  
B RED MAGNET LEAD } AT TERMINALS A & B ON  
C BLACK - CORD } POTTED PCB ASSY.  
D WHITE - CORD }

### WIRING INSTRUCTIONS



**SEE REVERSE SIDE  
BEFORE WIRING FOR  
IMPORTANT NOTES  
AND OPERATIONAL  
CHECK PROCEDURE**

- ROUTE TWO MAGNETIC BASE LEADS (RED WIRES WITH YELLOW SLEEVING) THROUGH ADJUSTING PLATE AND PAST ADJUSTING LOCK MECHANISM, ONE ON EACH SIDE. MAKE SURE SLEEVING IS NOT ABRADED DURING ROUTING.
- SECURE LINE CORD IN SUPPORT HOUSING.
- ATTACH GROUND TERMINAL TO SUPPORT HOUSING WITH GROUND SCREW. POSITION GROUND WIRE TERMINAL AS SHOWN, SO IT CAN SET FLAT AGAINST HOUSING BEFORE SECURING.
- ATTACH THE BLACK AND WHITE LEADS FROM LINE CORD, AS SHOWN.
- ATTACH THE LEADS FROM THE MAGNETIC BASE, AS SHOWN. **NOTE:** THE LEADS FROM THE MAGNETIC BASE CAN BE ATTACHED TO THE PANEL IN EITHER LOCATION.
- ATTACH THE POTTED PCB ASSEMBLY TO THE SUPPORT HOUSING.
- GENTLY PUSH THE BUNDLE OF WIRES DOWNWARD AND INSTALL THE CONTROL PANEL INTO THE HOUSING. AVOID PINCHING WIRES OR THE RIBBON CABLE AS THE CONTROL PANEL IS BEING INSTALLED.

**THIS PANEL ASSEMBLY IS DESIGNED FOR USE WITH FULL-WAVE MAGNETIC BASES ONLY (4202, 4203 Mag Stands)**

TO DETERMINE IF THE MAGNETIC BASE IS FULL-WAVE OR HALF-WAVE, DISCONNECT THE TWO (2) RED MAGNETIC LEADS (A & B) FROM THE STAND'S CONTROL PANEL AND MEASURE THE RESISTANCE ACROSS THE LEADS. THE RESISTANCE OF A PROPER OPERATING FULL-WAVE MAGNETIC BASE WILL BE BETWEEN 97 AND 119 OHMS; A HALF-WAVE WILL BE BETWEEN 37 AND 45 OHMS. **WARNING! IF FULL WAVE PANEL KIT IS ATTACHED TO A HALF-WAVE MAGNETIC, THE PANEL WILL BE DESTROYED WHEN ENERGIZED.**

**FOR HALF-WAVE BASES (4201, 4221, 4231 Mag Stands) USE PANEL ASSEMBLY NO. 23-35-0321.**

PANEL ASSEMBLY IS ATTACHED TO THE SUPPORT HOUSING IN ONE OF TWO WAYS.

- THREE (3) #8-32 MACHINE SCREWS ARE USED THROUGH THE TOP AND MIDDLE HOLES IN THE POTTED ASSEMBLY, USING THE TAPPED HOLES IN THE BACK OF THE SUPPORT HOUSING (**CURRENT PRODUCTION**).
- FOR **NON-TAPPED** SUPPORT HOUSING (**PREVIOUS PRODUCTION**), USE THE FOUR SETS OF (VELCRO®) LOCKING TAB CONNECTORS INCLUDED. THE SUPPORT HOUSING'S SURFACE FOR ATTACHING THE TABS OF THE KIT **MUST BE CLEAN AND DRY**. SURFACE SHOULD BE CLEANED WITH MINERAL SPIRITS AND ALLOWED TO DRY.

- 1.) PEEL OFF THE PLASTIC LINER FROM ONE SIDE OF A LOCKING TAB CONNECTOR AND STICK ONE TO EACH FOOT ON THE POTTED PCB ASSEMBLY.
- 2.) WITH A TAB CONNECTOR IN PLACE ON EACH FOOT, PEEL OFF THE REMAINING PLASTIC LINERS AND PRESS THE ENTIRE ASSEMBLY ONTO THE CLEAN INSIDE BACK SURFACE OF THE SUPPORT HOUSING.
- 3.) SEE WIRING INSTRUCTIONS, GENTLY PUSH WIRES DOWNWARD AND INSTALL CONTROL PANEL ASSEMBLY ONTO HOUSING.

**PANEL OPERATIONAL CHECKLIST**

1. SET UP
  - A) PLACE THE STAND ON A STEEL SURFACE
  - B) ATTACH A 120 V AC MOTOR
  - C) SET SPEED DIAL TO THE FULL-ON POSITION (ROTATE CLOCKWISE UNTIL DIAL KNOB STOPS)
  - D) APPLY 120 V AC
2. PRESS THE "FWD" BUTTON AND THEN PRESS THE "REV" BUTTON  
RESPONSE - DRILL DOES NOT OPERATE
3. PRESS THE "DRILL-OFF" BUTTON AND THEN THE "MAGNET" BUTTON  
RESPONSE - MAGNET TURNS ON, "MAGNET" BUTTON LIGHTS, DRILL DOES NOT OPERATE
4. TRY TO MOVE THE STAND  
RESPONSE - MAGNET DOES NOT ALLOW MOVEMENT
5. PRESS THE "FWD" BUTTON  
RESPONSE - DRILL ROTATES IN THE FORWARD DIRECTION
6. PRESS THE "DRILL-OFF" BUTTON  
RESPONSE - DRILL ROTATION STOPS
7. PRESS THE "REV" BUTTON  
RESPONSE - DRILL ROTATES IN THE REVERSE DIRECTION
8. PRESS THE "DRILL-OFF" BUTTON  
RESPONSE - DRILL ROTATION STOPS
9. PRESS THE "FWD" BUTTON  
RESPONSE - DRILL ROTATES IN FORWARD DIRECTION
10. PRESS THE "MAGNET" BUTTON  
RESPONSE - MAGNET STAYS ON AND "MAGNET" BUTTON STAYS LIT
11. ROTATE THE "SPEED DIAL" TO IT'S FULL OFF POSITION AND THEN BACK TO FULL-ON  
RESPONSE - MOTOR SPEED DECREASES AND INCREASES IN RESPONSE TO THE DIAL SETTING
12. PRESS THE "REV" BUTTON  
RESPONSE - DRILL SPEED DECREASES BEFORE REVERSING (SLIGHT FOR THE 4253 MOTOR), DRILL ROTATION CHANGES TO REVERSE, DRILL SPEED INCREASES TO FULL ON
13. PRESS THE "MAGNET" BUTTON  
RESPONSE - MAGNET STAYS ON AND "MAGNET" BUTTON STAYS LIT
14. PRESS THE "DRILL-OFF" BUTTON  
RESPONSE - DRILL ROTATION STOPS AND MAGNET STAYS ON, "MAGNET" BUTTON STAYS LIT
15. PRESS THE "MAGNET" BUTTON  
RESPONSE - MAGNET TURNS OFF, "MAGNET" BUTTON EXTINGUISHES

