

WIRING INSTRUCTIONS

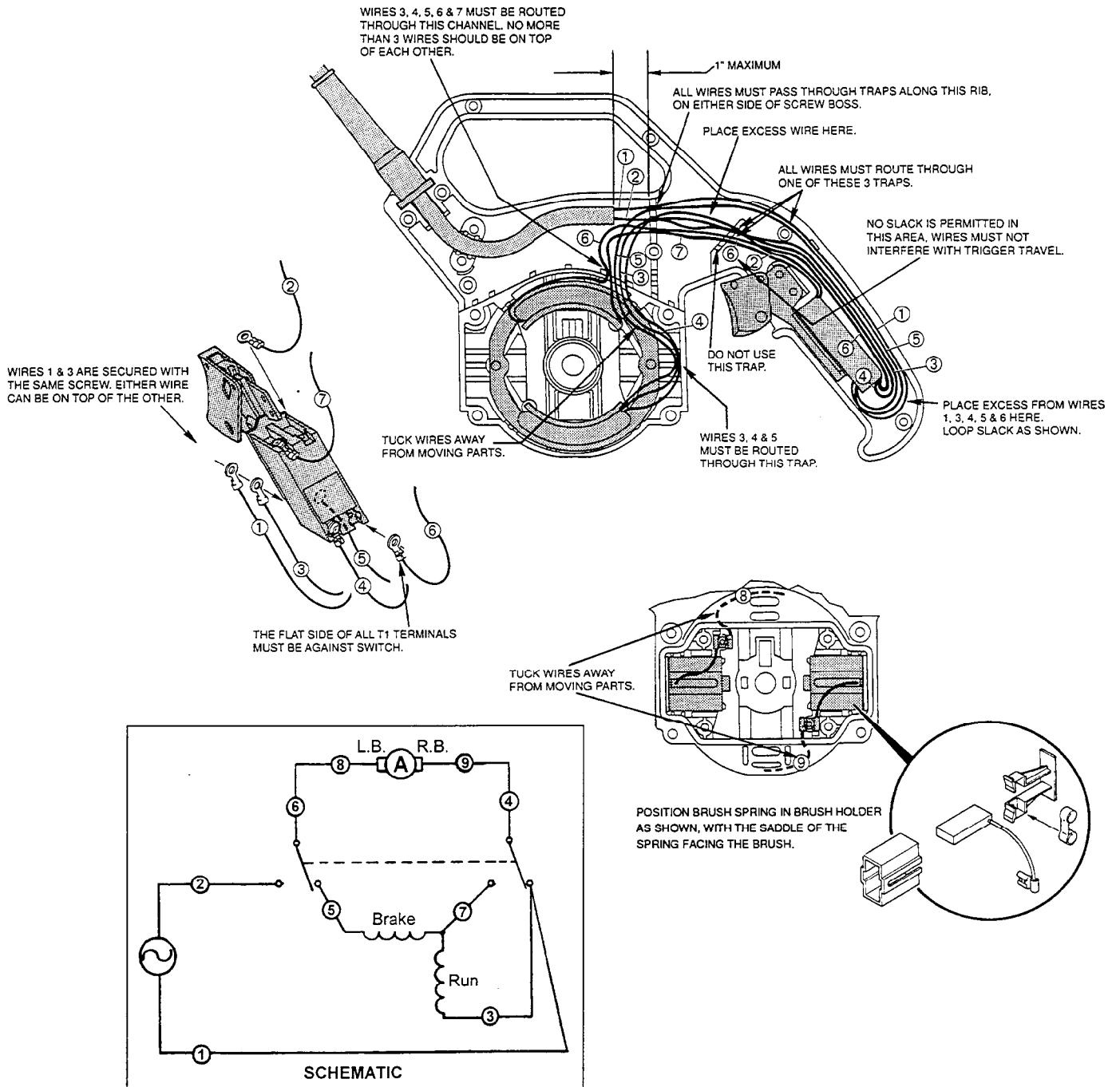
TITLE

MITER SAW

**BULLETIN
58-01-1350**

MILWAUKEE ELECTRIC TOOL CORP. 13135 WEST LISBON RD. BROOKFIELD, WI

DATE
July '98



WIRING SPECIFICATIONS

| Wire No. | Wire Color | Origin or Part No. | Gauge | Length | Terminals, Connectors and End Wire Preparation |
|----------|------------|--------------------|-------|---------|--|
| 1 | White | Cord | 14 | 9" | Strip 3/16" for T1 |
| 2 | Black | Cord | 14 | 6" | Strip 3/16" for T1 |
| 3 | White | Field | 16" | 14" | Strip 3/16" for T1 |
| 4 | Yellow | Field | 16" | 14" | Strip 3/16" for T1 |
| 5 | Blue | Field | 16" | 14" | Strip 3/16" for T1 |
| 6 | Black | Field | 16" | 12-1/2" | Strip 3/16" for T1 |
| 7 | Red | Field | 16" | 8" | Strip 3/16" for T1 |
| 8 | Black | Field | 16" | 2-3/4" | Strip 1/4" for T2 |
| 9 | Yellow | Field | 16" | 2-3/4" | Strip 1/4" for T2 |

NOTE:

All leads must be held to +/- 1/8".
All lead lengths are before stripping.

TERMINAL DESCRIPTION

| Code | Part. No. | Qty. |
|------|------------|------|
| T1 | 23-74-0120 | 7 |
| T2 | 23-74-1140 | 2 |

Bulk Lead Wire = Bulletin 58-01-0003